



American Forest Foundation



*The future is always
beginning now.*

-Mark Strand, Poet & Author

THE AMERICAN FOREST FOUNDATION • 2010 ANNUAL REPORT
We grow stewardship every day.



PRESIDENT'S MESSAGE

When a farmer plants a row of corn it's an act of faith, planting with the expectation that nature, pests, and markets will cooperate so that their hard work and investment is realized months later. It's amazing that so many farmers are willing to make that leap. When people regenerate their woodlands or educators teach young people about stewardship they are doing it with the expectation that their dedication, hard work, and investment are realized generations later.

The American Forest Foundation's (AFF) national networks are comprised of people willing to make these long-term commitments for the health of their forests and their communities. All of us benefit from their leap of faith with a more stewardship-literate citizenry, cleaner water, cleaner air, better habitat, open space, and good paying jobs.

AFF is committed to giving people the tools they need to be effective stewards of America's natural heritage. We work with educators, family woodland owners, policymakers, and partners in every state to give them the tools they need to keep our forests healthy and our children well-prepared for the future they will inherit.

As you will see in the pages that follow, AFF works on the ground with those in Project Learning Tree® (PLT), the American Tree Farm System® (ATFS) and our partner organizations to give people the tools they need to be more effective stewards. Like educators and woodland owners, we are relentlessly focused on the future.

I am struck by how personal that future focus is to the people in our networks. If you ask a teacher about environmental education, they will inevitably tell you about a specific student having an epiphany one day during a PLT activity. And if you ask a woodland owner about their land they will talk, with pride, about the ATFS sign on their property. They'll talk about what the sign meant to their parents or grandparents, what it means to them, and their responsibility to care for their land, for their children, and grand children.

We hope you will join us to create a future where stewardship creates the sustainable forests we all depend on and today's children are ready to step up to be tomorrow's conservation leaders.



A handwritten signature in black ink, which appears to read "Tom Martin". The signature is fluid and cursive, written on a light-colored background.

Tom Martin,
President and CEO
American Forest Foundation

AMERICAN FOREST FOUNDATION

MISSION

We ensure the sustainability of America's family forests for present and future generations in conjunction with our strategic partners.

VISION

We are committed to creating a future where North American forests are sustained by a public that understands and values the social, economic, and environmental benefits they provide to our communities, our nation, and our world.

STRATEGIC PRIORITIES

- Stem the loss of America's woodlands.
- Enhance the quality of America's woodlands.
- Ensure decision-makers and educators understand and value America's woodlands.

BOARD OF TRUSTEES

Chair

Clint Bentz, CPA

Past Chair

Colin Moseley
Chair, Green Diamond Resource Company

Vice-Chair

Connie Best
Managing Director, Pacific Forest Trust

Treasurer

Kenneth Stewart

Co-Chair, Woodlands Operating Committee

John. W. Burke, III

Co-Chair, Woodlands Operating Committee

Judd Brooke

Chair, Environmental Learning Operating Committee

Frank Gallagher, Ph.D.
Administrator, New Jersey Dept of Parks and Forestry

At-Large-Member

David Gray
EVP, Mill & Timber Products Ltd

At-Large-Member

Judy Braus
VP of Education & Centers, National Audubon Society

At-Large-Member

Shorna Broussard Allred, Ph.D.
Associate Professor, Department of Natural Resources
Cornell University

At-Large-Member

Steve Quarles
Partner, Crowell & Moring LLP

At-Large-Member

Sara Vickerman
Sr. Director, Biodiversity Partnerships, Defenders of Wildlife

At-Large-Member

Sally D. Collins
Owner, Sally Collins, LLC

At-Large-Member

Nat B. Frazer
Dean, College of Natural Resources
Utah State University

At-Large-Member

Rick R. Holley
President and CEO, Plum Creek Timber Company

At-Large-Member

James Buzzard
President, MeadWestvaco Corporation

At-Large-Member

Daniel P. Beard
Independent Consultant

Counsel

Eileen Morgan Johnson
Co-Chair, Nonprofit Organizations Group
Whiteford Taylor & Preston LLP

PROJECT LEARNING TREE

grows stewardship student by student

FOCUS ON THE YOUNG CHILD

Project Learning Tree launched its first curriculum guide focused exclusively on the young child, *Environmental Experiences for Early Childhood*, in early 2010, earning accolades from teachers, parents and curriculum experts.. Developed with preschool educators and early childhood specialists, the guide is designed for educators who work with children age three to six. It offers more than 130 experiences to engage young children to explore, discover, and communicate. With this guide, children are introduced to environmental education at a key developmental period in their lives.

The guide received a *Learning*® magazine 2011 Teachers' Choice award, one of the most recognized and prestigious awards in the education community. The material is already global, with translations in Japanese and Spanish. The guide has been correlated to the new Head Start guidelines, the Child Development and Early Learning Framework.

"The Teachers' Choice Awards for the Classroom honors products for their superior quality and use in today's classrooms. Environmental Experiences for Early Childhood was well received by our teacher evaluators and their students for its exceptional content and easy-to-integrate lessons."

HEATHER CREWS, TEACHERS' CHOICE AWARD
COORDINATOR FOR *LEARNING* MAGAZINE

"PLT's Environmental Experiences for Early Childhood has been some of the most fun I have ever had! Watching a young mind be so excited about exploring and learning outside, and seeing the smiles as we dance the tree hoedown, is incredibly rewarding."

DIANNE MILLER, SOUTH DAKOTA PLT STATE COORDINATOR



GREENSCHOOLS!, GROWING SCHOOL BY SCHOOL

More than 800 schools have registered online to participate in PLT's *GreenSchools!* program and that number is still growing. The environmental program provides an engagement blueprint for students, educators, administrators, advocates, and community members to learn together to create a more green and healthy learning environment at their school.

PLT is working closely with 70 pilot schools in 19 states that have received grants from the U.S. Forest Service, Learn and Serve America through the Corporation for National and Community Service, the Staples Foundation, and AFF.

GreenSchools! combines environmental education, service-learning, and leadership opportunities for students to help turn their school into a model green school. A set of five investigations enables students to examine their school's energy use, waste and recycling, water consumption, school site, and environmental quality. Students use the information to recommend or take action to reduce their school's ecological footprint.

"This program gives the school tools to make decisions, and gives kids a sense of purpose and worthwhile achievement."

SANDY GRESHAM, SCIENCE TEACHER AND ENVIRONMENTAL EDUCATION COORDINATOR, LOWCOUNTRY PREPARATORY SCHOOL, SOUTH CAROLINA



Students at Lowcountry Preparatory School in South Carolina, formed teams and used light meters, thermometers, scales, and other tools to gather data and conduct their research. They shared their findings and recommendations with the school's board of trustees who were both excited by, and supportive of, their work. Along with delamping, students changed 600 bulbs in their school to CFLs to save more than \$5,000 a year. They also installed a "shut-down and boot" timer on each of the school's more than 55 computers, resulting in a savings of \$216 per computer per year. Teams of students made similar presentations regarding solid waste issues and school site improvements.

Students are included in PLT *GreenSchools!* trainings to get the program up and running at their schools, which empowers students to have a leadership role.

In keeping with a student focus and providing a venue for youth voices, teams of students and teachers from PLT *GreenSchools!* made presentations at the 2010 National Science Teachers Association (NSTA) conferences, the National Youth Leadership Council's (NYLC) National Service-Learning Conference, and PLT's 2010 International Coordinators' Conference. PLT has also formed a student advisory board with student representatives from PLT *GreenSchools!* across the country.

"The Greenschools! program has made a remarkable difference in our impact on our environment and learning about how we can become better citizens through our stewardship of natural resources."

ZAYRA SOTO, 8TH-GRADE STUDENT, SCUOLA VITA NUOVA CHARTER SCHOOL, KANSAS CITY, MISSOURI

GREENWORKS! GRANTS, WORKING ON THE GROUND

In 2010, thousands of elementary, middle, high school, and college students across the country completed *GreenWorks!* projects. They planted trees, designed native plant gardens, restored streams and riparian habitats, constructed hiking trails, started composting projects, and investigated alternative sources of energy, among other projects.

"We truly have become leaders and role models for our community."

CHRISTINA RAMOS, SOUTH TAHOE
HIGH SCHOOL STUDENT, CALIFORNIA

In addition, 17 schools completed butterfly gardens in their school yards and communities to fulfill grants awarded to PLT-trained teachers and students participating in MonarchLIVE – A Distance Learning Adventure to promote monarch butterfly conservation and education.

The annual migration of monarch butterflies is an "endangered natural phenomenon." Every year, millions of these tiny travelers migrate thousands of miles from the United States and Canada to spend the winter months in Mexico. This yearly move has made monarchs dependent on habitat conservation in all three countries. Through the MonarchLIVE program, PLT and its partners, the USDA Forest Service and the Prince William Network, promoted monarch education and supported the creation of places for butterflies to find nourishment and rest during their impressive journey.

"Through our GreenWorks! project, South Tahoe High School students learned how to educate younger children about their environment, how to plant trees, how to create a DVD, and how to present a speech to a large group of professional educators. These students now have the confidence that they can do anything!"

JOY BARNEY, USDA FOREST SERVICE
CONSERVATION EDUCATION PROGRAM
SPECIALIST, CALIFORNIA





In 2010, the program expanded to teach students about pollinators in general, including bees, birds, bats, and butterflies that play an important role in biodiversity, global food webs, and human health. This program, PollinatorLIVE, is helping teach students in grades 4-8 about pollinators, gardening, and conservation. In 2011, funding provided by the Forest Service, will also engage students in their communities in "learning-by-doing" projects to create more habitat for pollinators, including monarch butterflies. Twenty-eight projects in 20 states were awarded *Greenworks!* PollinatorLIVE garden grants.

"Our butterfly-shaped garden has provided a place for monarchs to find respite, and student learning has been enhanced beyond belief."

JOANN CANTLUPE, ENVIRONMENTAL SCIENCE
COORDINATOR, SAWGRASS SPRINGS ENVIRONMENTAL
MAGNET MIDDLE SCHOOL, FLORIDA

OUTSTANDING EDUCATORS

The 2010 Outstanding Educators were special guests at PLT's 2010 International Coordinators' Conference and were also invited to the World Forestry Center in Portland, Oregon to participate in their summer institute for educators.

Joy Cowart, 6-12th grade ESOL (English for Speakers of Other Languages) teacher, Lowndes County Schools, Georgia

Susan Cox, Conservation Education Coordinator for the Northeastern region, USDA Forest Service, New Hampshire

Reeda Hart, Outreach Specialist, Northern Kentucky University, Kentucky

Kurtis Koll, Professor of Physical Sciences, Cameron University, Oklahoma

Debra Wagner, 4th grade teacher, St. Paul Lutheran School, Florida



MORE STEWARDSHIP ON MORE ACRES

MEETING THE CHALLENGE

In 2010, AFF embarked on an ambitious Landowner Engagement Campaign to provide on the ground services to woodland owners.

Reductions in the number of company procurement foresters and state and federal agency budget cuts has resulted in less delivery of services to private forest owners. This has also impacted the ATFS network of 5,000 volunteers who provide leadership, support and inspections for certified Tree Farmers. This volunteer network is sustained by contributions of staff time by state forest agencies, state forest associations and other not-for-profits. All of these organizations have scaled back their support because of the financial challenges they face.

The forestry community also needs new ways to reach and engage landowners and AFF wants to lead the way toward implementing new approaches, grounded in our 70-year history of working with family forest owners. Going beyond this history, we also know that we have to learn and apply different strategies and tactics that will reach forest owners where they are — not only geographically, but also in accordance with their needs, concerns and mindset.

The Landowner Engagement Campaign is designed with these realities in mind and will:

- Strengthen the American Tree Farm System (ATFS), working with family forest owners around the country who are sustainably managing 26 million acres.
- Solidify the value proposition of being a member of ATFS and maintaining certification standards.
- Enhance and broaden alliances with other partners to reach more landowners and deliver on the ground services.
- Raise awareness among Congress and the Administration about policies that are needed to support family forest owners, grow their markets and,
- Develop a social marketing campaign that will seek to change behavior to bring more forest owners onto the stewardship path, improving their own experience on their land, and the overall health of America's forests.



COLLABORATIVE CONSERVATION

The iconic Driftless Area of southwest Wisconsin is famous for its rugged landscape of rivers, farms, and forests. Its rural people depend on the land for their way of life and economic well-being. At the same time, increasing numbers of city dwellers own get-away places there or regularly visit to fish, hunt, or simply spend time with loved ones in a beautiful setting.

A critical part of the Upper Mississippi watershed, it is no surprise that Wisconsin's Driftless Area has been identified as a priority landscape by the Wisconsin Department of Natural Resources' Statewide Forest Assessment. Yet, its forests are in crisis, threatened by unplanned development and unsustainable logging practices, leading to forest fragmentation, diminished wildlife habitat and water quality, and fewer potential forest products. For example, oak is a critical species for the region's economy and wildlife. However, its regeneration is not keeping up with rate of harvest and spread of oak wilt disease — both preventable.



The Driftless Area in Wisconsin, Minnesota, Iowa, and Illinois, is dominated by family woodlands. AFF is providing leadership to help bring together local partners - the Wisconsin DNR, University of Wisconsin Extension, Wisconsin Woodland Owners Association, Aldo Leopold Foundation, Wisconsin Tree Farm Committee, Trout Unlimited, Natural Resources Conservation Service, Kickapoo Woods Cooperative, Southwest Badger RC&D, Driftless Area Initiative, Wisconsin Family Forests, Mississippi Valley Conservancy, and the U.S. Forest Service to form the Driftless Forest Network.

This unique network is identifying the highest priority landscape issues - increasing habitat for interior forest songbirds and other wildlife, overall water quality improvement, and ensuring the future of oak, while helping achieve larger ecological goals.

To meet these challenges, the network began in 2010 to implement these key strategies:

1. Identify prime demographic segments of landowners with the greatest potential for engagement and the largest opportunity for impact on the land.
2. Develop an outreach and education plan that addresses the highest priority values and goals of these landowners.
3. Develop a volunteer corp of experienced landowners to help guide woodland owners toward information and help, and to provide critical follow up contact.
4. Develop interactive, online tools that will help targeted landowners move through stewardship pathways based on their goals and values.

The Network's long-term vision is to help significant numbers of landowners reach their forestland goals by using sustainable practices that lead to improved landscape health.

HEALTHY MARKETS, HEALTHY FORESTS

As one Tree Farmer succinctly noted, “Healthy forests need healthy markets.” Throughout 2010, AFF worked with policy leaders, administration officials, industry partners and other stakeholder groups to improve markets for ATFS certified wood and to raise awareness about the contribution of family forest owners to ensuring clean water, clean air, wildlife habitat, recreational opportunities, wood products, and good paying rural jobs.

During the last year we have worked closely with our allies in the Green Building Strategy Group to create “wood-friendly” green building material policies in the federal government. We focused initially on the U.S. Department of Agriculture and made progress in getting them to realign their building policies and begin to see themselves as an advocate for wood promotion.

AFF played a leadership role in 2010 working with dozens of partners across the country to help make ecosystem markets a reality for the woodland owners who need income to offset the cost of their stewardship.

AFF co-sponsored the Third Annual National Ecosystem Markets Conference in Raleigh-Durham, North Carolina. The conference brought together the nation’s top thought leaders to discuss the state of ecosystem markets, to learn about projects on the ground, and to tackle the tough issues facing these markets in order to drive them forward.

AFF continued developing projects to demonstrate various ways that landowners can receive payments for the ecosystem services that are an outcome of sound natural resource management.



The Northern Forest Watershed project is developing the tools and systems to pay private forestland owners to protect water quality in the Crooked River and Upper Connecticut watersheds in the northeast. In 2010, the project completed research and analysis to understand the financial, legal, regulatory and cultural factors that will help identify specific tools appropriate to these watersheds.

Project activities in 2010 included analysis to identify the most effective conservation practices to improve water quality - often tree planting - and the highest priority places to install them – generally in open fields near streams. Work began on a cost/benefit analysis to compare the costs of keeping healthy forests to protect water quality and the costs of building water treatment plants to treat water to the same quality. We anticipate that the results of this analysis will help us in finding ways to link people downstream who depend on clean water with people who own and manage land upstream, so that these landowners can benefit economically from the clean water that their healthy forests provide.

In a different approach to building markets, AFF's Sandhill Habitat Restoration Credit System sought to protect and restore gopher tortoise habitat in the Southeast by providing income opportunities for private forestland owners. A habitat quality evaluation system was developed to generate and recognize credits that can then be traded on the open market. This evaluation system earned support from a number of professional experts in long leaf pine ecological systems and in gopher tortoise biology. Agencies whose approval of this concept is critical to its long-term success continue to support this initiative. The next step will be for natural resource agencies to approve the evaluation system to ensure the program can be brought to scale and involve more landowners in habitat restoration that is key to the survival of the gopher tortoise.

In 2010, we continued to work to improve the U.S. Green Building Council's LEED rating system. In a bipartisan effort lead by Reps. Kurt Schrader (D-OR) and Bob Goodlatte (R-VA), we were successful in securing signatures from 79 representatives in 36 states, on a letter to USGBC, calling on the organization to give credit to all of the major third-party forest certification systems in the U.S. We also worked with the Senate Agriculture Committee leadership which asked the U.S. Department of Agriculture to improve their green building policies to support wood products.

To advance federal policies that will help keep working forests, working, AFF played a leadership role in several key industry-conservation group coalitions, including the Working Forest Coalition and the Forest Climate Working Group. In addition, we re-launched the Forests in the Farm Bill Coalition to set the stage for a broad coalition effort in 2011 to defend and improve forestry programs in the 2012 Farm Bill.

AFF also played a key role in ensuring the issues facing family forest owners were front and center in listening sessions held by the Obama Administration all over the country as part of the American Great Outdoors Initiative. Helping family forest owners stay on the land and manage forests sustainably is essential to a healthy outdoor strategy, economically viable communities, and a strong conservation ethic. AFF's policy positions were represented in most of the 12 listening sessions by Tree Farmers and/or PLT partners, and in the final report from the Administration.

A special forest-focused session was held in Concord, New Hampshire. In his comments to the audience, Secretary of the U.S. Department of Agriculture Tom Vilsack stated, "Government policies must make it easier for landowners to continue to maintain their forests as forests." Two ATFS Certified Tree Farmers were among the panelists talking about the need for healthy markets, and received recognition for their comments in regional press covering the event.

A key win for family forest owners in 2010, was the decision to maintain the estate tax rate at the 35 percent rate on \$5 million. AFF's efforts included nearly a 1,000 letters from ATFS family forest owners and helped avoid the estate tax reverting back to 2001 levels, which would have put millions of acres of America's forest heritage at risk.

Albeit a temporary fix, AFF will continue to work for permanent changes in the estate tax to allow families to defer estate taxes as long as they keep their forested land, forest, and manage their woodlands sustainably.



THE AMERICAN TREE FARM SYSTEM® grows stewardship from the roots

SALEM, DIANNE, AND PATRICK – WORKING FOR THE NEXT GENERATION



The mission of stewardship took Salem, his wife Dianne, and his son Patrick on a path that ended with their recognition as the 2010 National Outstanding Tree Farmers of the Year.

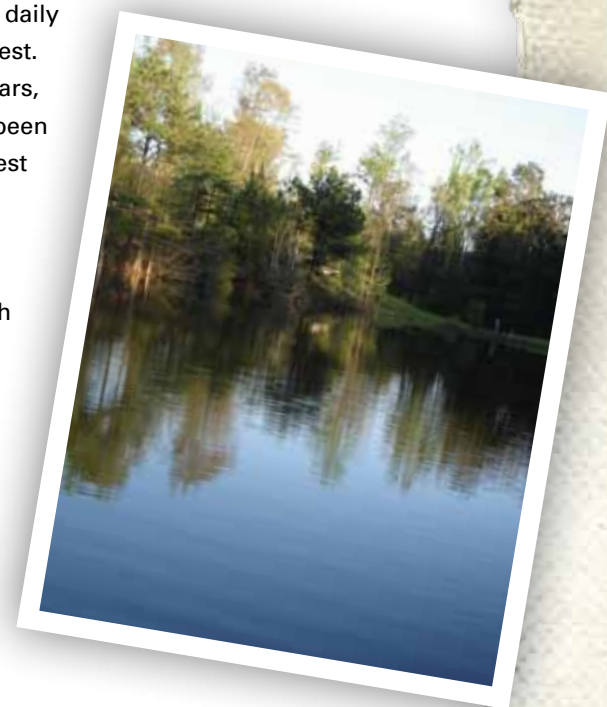
The Salooms' Tree Farm is a labor of love and faith. Salem attributes the success and happiness of his life – to his parents. They taught him to “tend a vigorous garden,” and believe “you can do anything.”

Salem Saloom was born and raised in Enterprise, Alabama. In 1983, Saloom bought 158 acres of forest property in Conecuh County. His goal was to improve the land's timber as well as wildlife, while creating a family refuge. For the next 27 years, the Salooms would buy surrounding parcels of forestland that today totals 1,762 acres of Saloom Properties.

In 2004, when Hurricane Ivan devastated southern Alabama, it took its toll on the Saloom Tree Farm devastating the timber stand and the Saloom's finances. They took this adversity and turned it into an opportunity - replanting 136 acres of longleaf pine, Alabama's native species.

Salem, Dianne, and Patrick are hands-on landowners. A visit to the property is to witness reverence for all life. Every decision is made with wildlife in mind. For numerous years, the Salooms have participated in the Wildlife Habitat Incentive Program and making use of cost shares that pertain to planting longleaf and constructing and maintaining fire lands and wildlife openings. From woods to water, numerous species have made the Saloom Tree Farm their home including the gopher tortoise, a threatened species.

Today, Saloom Properties offers field trips to explore the forest. Fishing, hunting, camping, horseback riding, hiking, and other activities can occur daily in the Salooms' forest. For the past five years, the Salooms have been involved in the Forest in the Classroom/ Classroom in the Forest Program in which they visit fifth grade classes and speak with them about forestry.



ATFS IS SETTING THE COURSE FOR THE NEXT GENERATION OF WOODLAND OWNERS

Caring for forestland is an intergenerational project. It provides families an opportunity to share and grow together, to learn new approaches, and to discover the legacy of the land. The 2010 Annual National Tree Farmer Convention in Burlington, Vermont offered families a multi-generational experience. A full, youth focused program complimented the three-day gathering of landowners, foresters, and other natural resource professionals. Twenty-one children, ages 6-15, from all across the country, participated in the program at the Echo Lake Aquarium and Science Center on Lake Champlain. Renowned storyteller and educator, Michael Caduto, made a special presentation during the activity-filled day. Participants created legacy cards to celebrate family forests, built bird houses and painted pots filling them with organic Vermont flower seeds to take back a souvenir of their first convention.

"I wanted the children to meet other children who are part of this legacy, the future forest stewards together for a day learning about trees, forests, watersheds, and celebrating their heritage together. I wanted them to leave understanding how valuable that legacy is."

REBECCA ROY, PROJECT LEARNING TREE STATE COORDINATOR
AND CONSERVATION EDUCATION COORDINATOR FOR THE
VERMONT DEPARTMENT OF FORESTS, PARKS & RECREATION



ON THE GROUND

In 2010, AFF implemented the next generation of certification standards for ATFS woodland owners and focused education efforts to landowners on the new requirements and training of foresters. More than 2,000 foresters were trained to conduct inspections to the new standards.

ATFS is committed to increasing the amount of certified fiber and several new projects that were in the works in 2010 will increase ATFS Certified acres:

In Maine, ATFS worked with the Sustainable Forestry Initiative®, Time, Inc., Hearst Publications, New Page Corporation, Sappi Fine Paper, and Verso Paper Corporation on a pilot project to increase certified fiber in the state by approximately one million acres. In the summer of 2010, ATFS added 100,000 certified acres to the Maine Tree Farm Program. During the next two years, AFF will work with the Small Woodland Owners Association of Maine and the Maine Department of Forestry to add certified acreage with a one million acre goal.

In 2011, ATFS will work with other state partners to facilitate agreements to bring more private forestlands under ATFS Certification.

AFF and ATFS worked throughout 2010 to achieve “one-stop-shopping” for certified woodland owners seeking federal support through Farm Bill programs such as the Environmental Quality Incentives Program (EQIP). A secured reciprocity agreement with the U.S. Forest Service now recognizes ATFS forest management plans and Forest Stewardship Plans as equivalent. As 2010 came to a close, work began on a similar agreement with the Natural Resources Conservation Service and a national forest management plan template to be recognized and supported by all three organizations and eventually by most state stewardship programs.



AMERICAN FOREST FOUNDATION STAFF

Our financial support from individuals, foundations, corporations, and grants goes directly to program services reaching educators, children and youth, and family woodland owners. Our most recent, audited financial statement is available at www.forestfoundation.org/financialstatements

Sara Anrrich

Program Coordinator, American Tree Farm System

Rachel Bayer

Manager, Education & Network Partnerships,

Hillary Bennett

Grants Manager

Quincy Blanchard

Certification Coordinator, American Tree Farm System

Diane Brown-Tapia

Database Coordinator

Vanessa Bullwinkle

Director of Communications

Christine Cadigan

Manager, Public Affairs

Amanda Cooke

Media & Marketing Manager

Kyle Cooper

Program Coordinator, Project Learning Tree

Sarah Crow

Certification Manager, American Tree Farm System

Jerry Greenberg

Senior Vice President, Conservation

Melissa Harden

Manager, Public Affairs

Rita Hite

Vice President, Public Affairs

Avinash Jhalani

Manager, Finance & Administration

Brigitte Johnson, APR

Director of Communications & Executive Editor

Jennifer Jones

VP, Communications

Caroline Kuebler

Outreach Manager, American Tree Farm System

Tom Martin,

President & CEO

James McGirt

Manager, Education Programs, Project Learning Tree

Kathy McGlaufflin

Senior Vice President, Education

John Otte

Production Manager

Liz Sandler

Director, American Tree Farm System

Bob Simpson

Senior Vice President, Forestry

Scott Smiley

Vice President, Finance & Administration

Mary Snieckus

Manager, Conservation Incentives

Jaclyn Stallard

Manager, Education Programs, Project Learning Tree

Al Stenstrup

Director, Education Programs, Project Learning Tree

Jenna Swirsky-Sacchetti

Individual Donor Coordinator

Paul Trianosky

Director, Southern Forest Conservation

Laura Tuel

Vice President, Development

DeAnn Gradington Wallace

Executive Assistant

Amy Yambor

Manager, Operations, American Tree Farm System



American Forest Foundation



1111 Nineteenth Street, NW, Suite 780, Washington, D.C. 20036
P 202.463.2462 • F 202.463.2461 • www.forestfoundation.org • ©2011